

# *In-vitro* **Genetic Toxicology**

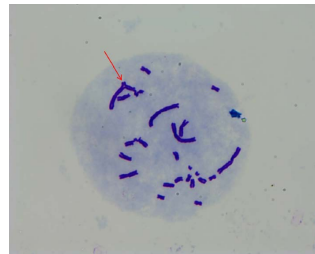


## *Ames Test*

- Ames Kit
- Mini-Ames Kit
- Micro-Ames Kit
- Strain Identification Kit

## *Chromosomal Aberration (CA)*

- In Vitro Chromosomal Aberration Test Kit
- In-Vitro Micronucleus Test Kit

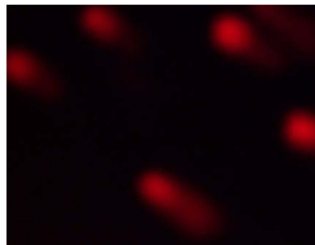


## *Gene Mutation Detection (MLA)*

- TK Gene Mutation Test Kit
- HPRT Gene Mutation Test Kit

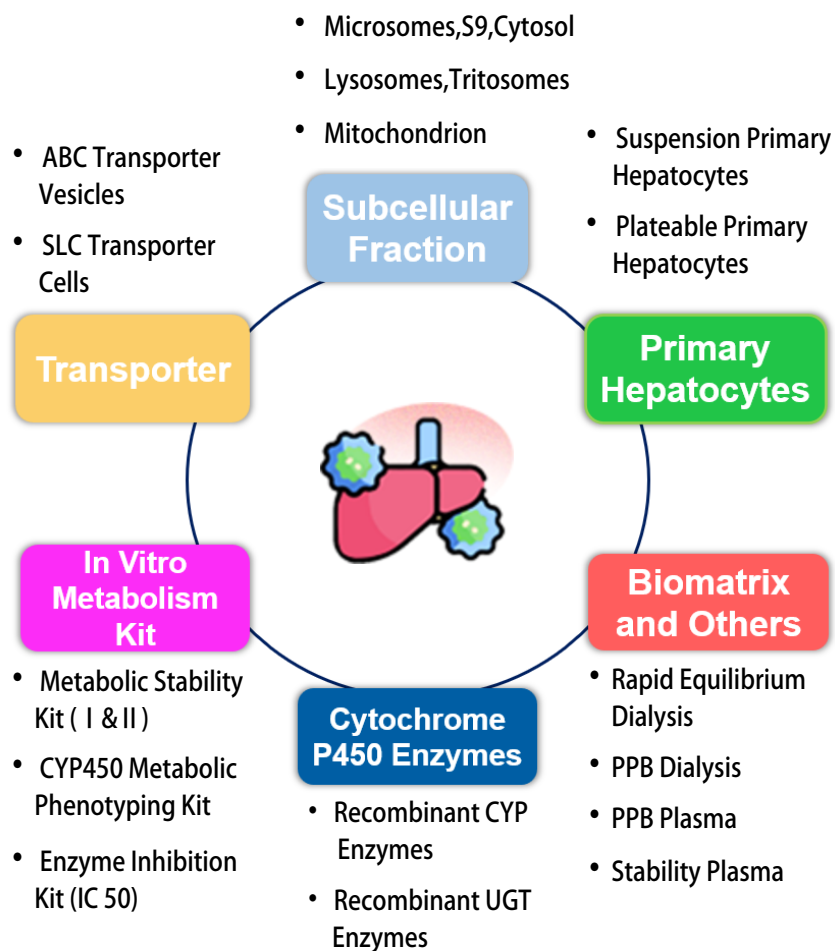
## *Others*

- Comet Assay Kit
- UMU/sos Test Kit
- Induced Rat Liver S9
- Induced Hamster Liver S9



## **ADME**

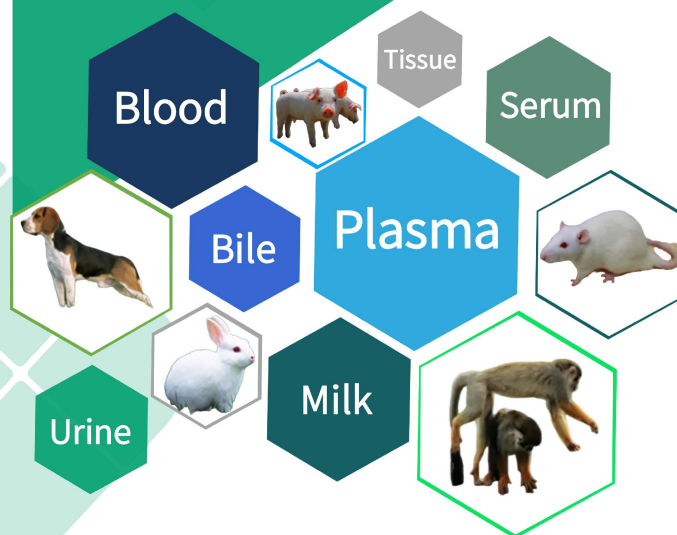
### ***In Vitro Metabolism, Transporter, DDI***



*IPHASE is a leading global provider of ADME-Tox, Transporter, Drug-Drug Interaction, Genetic Toxicity, Bioanalysis, CGT research products as well as ADME/ DMPK services.*



# Biological Matrix and Tissue Homogenate



## *Biological Matrix for Ophthalmic Drug Research*

- Aqueous Humor
- Vitreous Humor

## *Biological Matrices for Biological Sample Analysis*

- Exogenous Substance  
Bioassay  
Methodology Validation Kit  
Conventional Biological Matrix
- Endogenous Substance  
Bioassay  
Biological matrix with endogenous  
depletion  
Artificial Biological Matrix

## *Biological Matrice for ADME Research*

- Exclusive Plasma
- Exclusive whole blood
- TCR tissue section/  
microarray

## *Biological Matrix for Immunology Research*

- Peripheral Blood
- Spleen
- Marrow



**IPHASE BIOSCIENCES**

E-mail: [info@iphasebio.com](mailto:info@iphasebio.com)

Tel: +1 267-613-8425

# CGT Products, Professional Choice of Gene and Cell Therapy



## *Immune Cells*

CD3+T, CD4+T, CD8+T,  
CD19+B, Monocytes, NK,  
DC, Macrophages, etc

- Human
- Mouse

## *Mononuclear Cells*

Human, Monkey, Dog,  
Rat, Mouse, etc

- PBMC
- SMC
- BMMNCs
- CBMC

## *Cell Sorting Kit*

CD3+T, CD4+T, CD8+T,  
CD19+B, Monocytes, NK Cells

- Human, Mouse
- Positive Sorting
  - Aptamer traceless selection

## *Auxiliary Products*

CD3/CD28 T cells amplification  
Induced DC cells Differentiation  
Induced Macrophage Differentiation  
Targeted culture of NK cells

