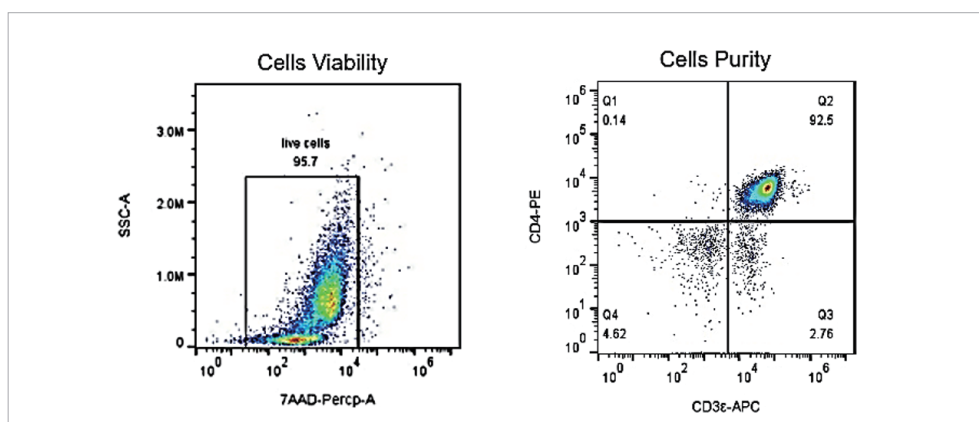


IPHASE® Immune cell subsets>>>

IPHASE offers products for isolating highly pure human and mouse immune cells using negative immunomagnetic cell selection while maximally retaining the original state and viability of the cells. IPHASE now offers fresh and frozen products of CD3+ T cells, CD4+ T cells, CD8+ T cells, CD19+ B cells, monocytes, NK cells, and other cells as reliable raw materials for immunology research.



Quality Control Result of IPHASE Mouse CD4+T Cells after Isolation

Product Description	Species	State	Size
IPHASE CD3+T Cells, Negative Selection	Human/ Mouse	Fresh/Frozen	5/20 million
IPHASE CD4+T Cells, Negative Selection	Human/ Mouse	Fresh/Frozen	5/20 million
IPHASE CD8+T Cells, Negative Selection	Human/ Mouse	Fresh/Frozen	5/20 million
IPHASE CD14+Monocytes Cells, Negative Selection	Human/ Mouse	Fresh/Frozen	2/5 million
IPHASE CD19+B Cells, Negative Selection	Human/ Mouse	Fresh/Frozen	2/5 million
IPHASE CD56+NK Cells, Negative Selection	Human/ Mouse	Fresh/Frozen	2/5 million
IPHASE Peripheral Blood Dendritic Cells	Human/ Mouse	Fresh/Frozen	0.5million
IPHASE Peripheral Blood Macrophages	Human/ Mouse	Fresh/Frozen	1.5million

IPHASE® MONONUCLEAR CELLS>>>

- ✓ Peripheral Blood Mononuclear Cells
- ✓ Spleen Mononuclear Cells
- ✓ Bone Marrow Mononuclear Cells
- ✓ Cord Blood Mononuclear Cells
- ✓ Mobilized Peripheral Blood Mononuclear Cells